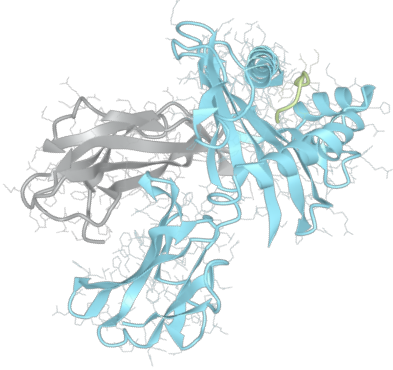


Product datasheet

sHLA-B*15:08

B*1508, B1508, B*15, B15, B75



Serological Name	B75
Peptide Load	Endogenous
Modification	Unmodified
Conjugation	Unconjugated
SKU	B1508

Product Description

Allele Name	B*15:08 B2m
HLA Class	HLA Class I
HLA Gene Locus	HLA-B
Alternative Allele Name A Chain	B*1508, B1508, B*15, B15, B75
Alternative Allele Name B Chain	-

Description Recombinant, truncated Class I soluble Human Leukocyte Antigen (sHLA), naturally folded and glycosylated, loaded with endogenous peptides.

Serological Name	B75
Serological Split	B15/B62
Bw4/Bw6 Assignment	Bw6
Bw4/Bw6 Sequence	SLRNLRG
Allele Frequency [World Population]	
A chain	0.2%
B chain	-

Associated products

[B1508bio](#)
[B1508pe](#)

Product Specification

Product name	HLA-B*15:08
HLA Species	Human
Host Cell Line Species	Human
Clone Designation	F8E12
Tail Specification	VLDL
Peptide Load	Endogenous
Modification	Unmodified
Conjugation	Unconjugated
Complexity	Monomer
Protein Format	Recombinant, truncated, soluble, non-modified, non-labeled, endogenously loaded
Storage Temperature	4 °C (This product should be stored undiluted)
Form	Liquid
Concentration	1000.0 µg/ml
Formulation	PBS/0.02% Sodium Azide
pH	7.4
Purification Method	Affinity Chromatography
Grade	Research Use Only [RUO]
Authentication Verification	Sequence Based Typing

Protein Sequences

Alpha Chain Sequence	GSHSMRYFYT AMSRPGRGEP RFIAVGYVDD TQFVRFSDSA ASPRMAPRAP WIEQEGPEYW DRNTQIFKTN TQTYRESLRN LRGYYNQSEA GSHTLQRMYG CDVGPDRLL RGHDQSAYDG KDYIALNEDL SSWTAADTAA QITQRKWEAA REAEQWRAYL EGLCWEVLRRL YLENGKETLQ RADPPKTHVT HHPISDHEAT LRCWALGFYP AEITLTWQRD GEDQTQDTEL VETRPAGDRT FQKWAAVVVP SGEEQRYTCH VQHEGLPKPL TLRVSVSTDD DLA
Beta Chain Sequence	IQRTPKIQVY SRHPAENGKS NFLNCYVSGF HPSDIEVDLL KNGERIEKVE HSDLSFSKDW SFYLLYYTEF TPTEKDEYAC RVNHVTLSP KIVKWRDMD

Related Products

[B1508](#)
[A0201](#)
[A0301](#)
[B0702](#)

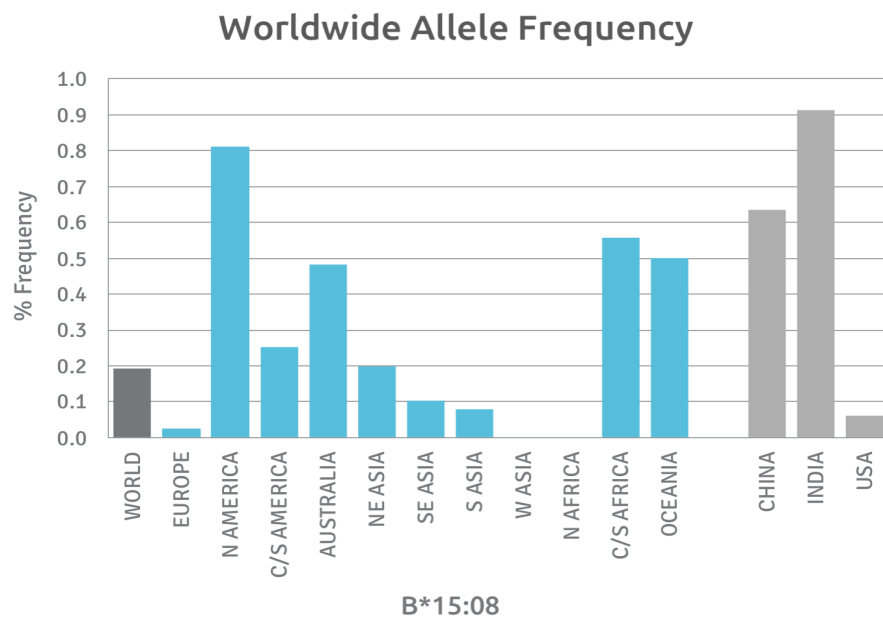
Applications

HLA Sandwich ELISAs
HLA Direct ELISAs
HLA-Sera Antibody Assays
HLA Controls in ELISA Assays
HLA Assay Standards
HLA Blocking Assays
HLA Neutralizing Assays
HLA Competition Assays
HLA Bead Assays
HLA Immunization Procedures

Recommended Antibodies

W6/32
Anti-B2m

Allele Frequency



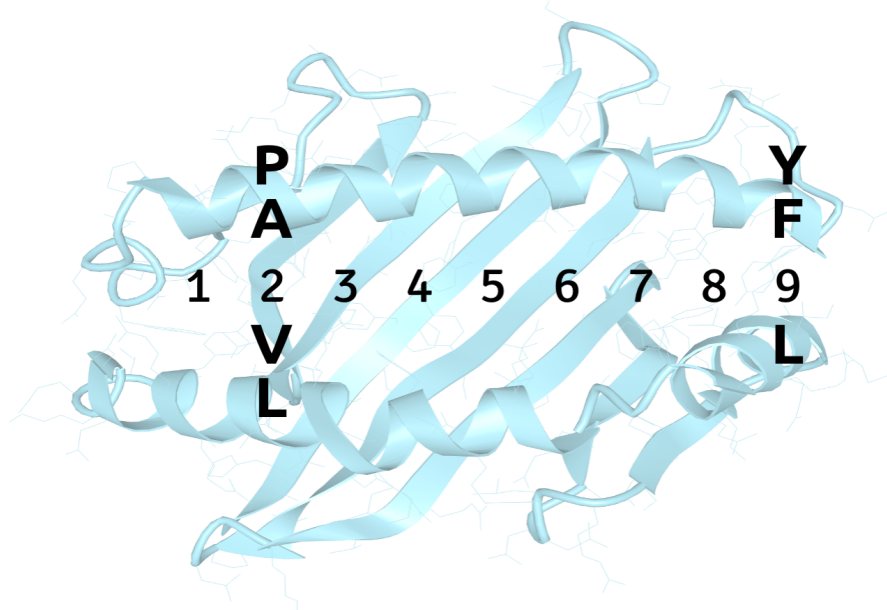
Please note:
ALL PRODUCTS ARE FOR RESEARCH USE ONLY. NOT FOR COMMERCIAL USE IN DIAGNOSTIC PROCEDURES.
For more information, please visit our Policies section on our website. For licensing inquiries, please contact

licensing@hlaprotein.com



Motif

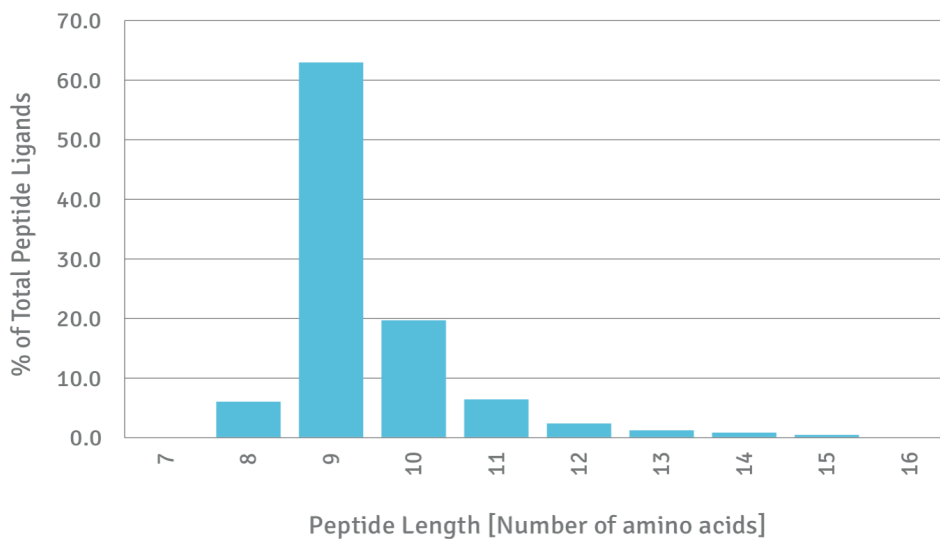
B*15:08 BINDING MOTIF



Length Distribution

HLA Length Distribution

B*15:08



Please note:

ALL PRODUCTS ARE FOR RESEARCH USE ONLY. NOT FOR COMMERCIAL USE IN DIAGNOSTIC PROCEDURES.

For more information, please visit our Policies section on our website. For licensing inquiries, please contact

licensing@hlaprotein.com

